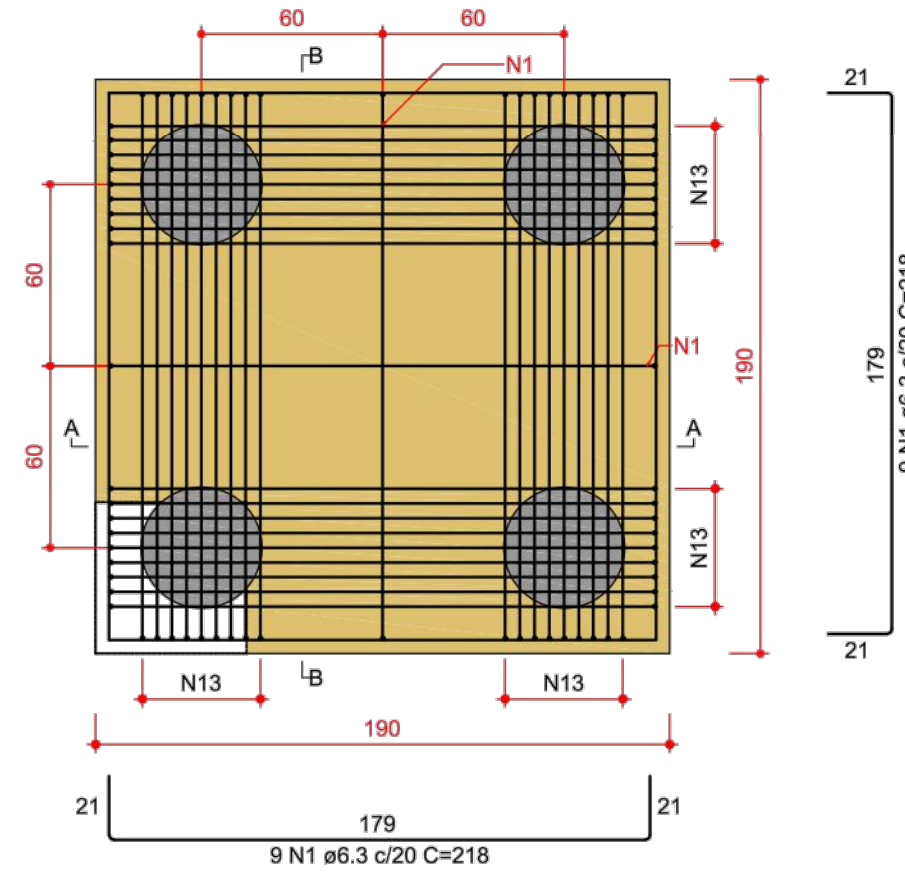
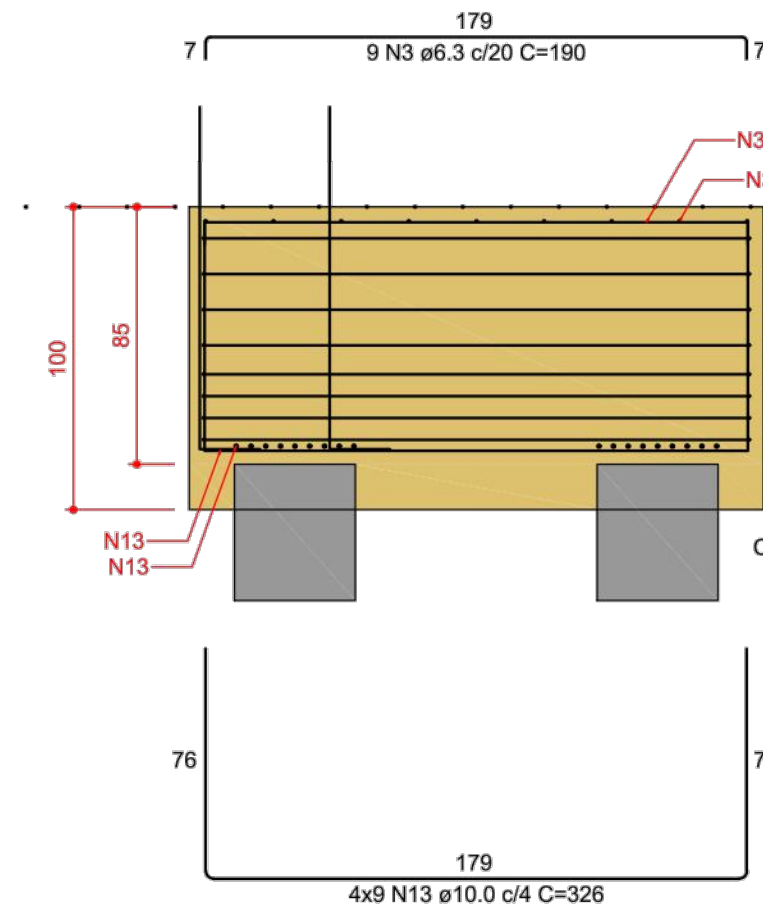


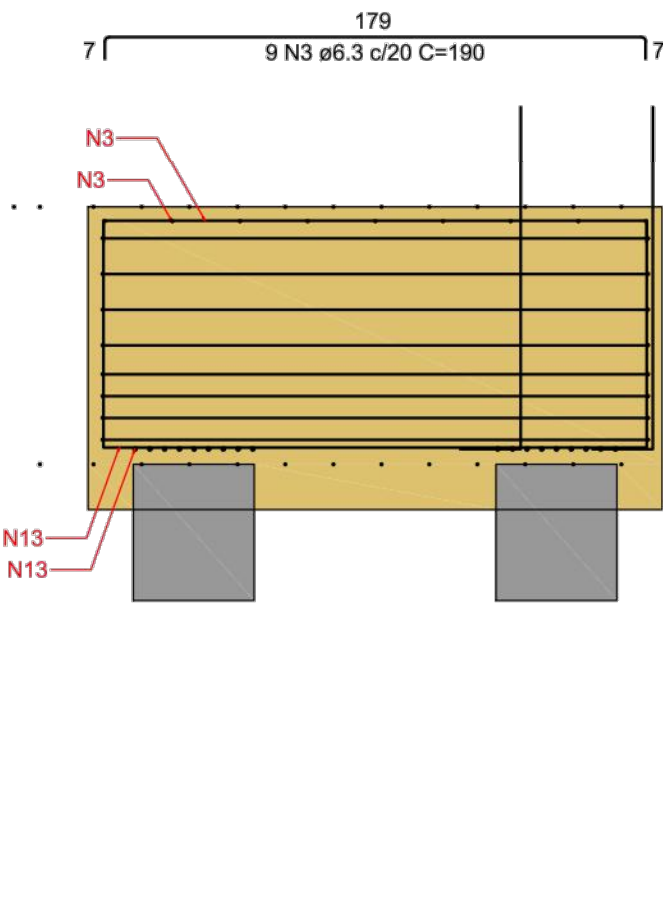
BB-6  
4xHC40  
PLANTA  
ESC 1:25



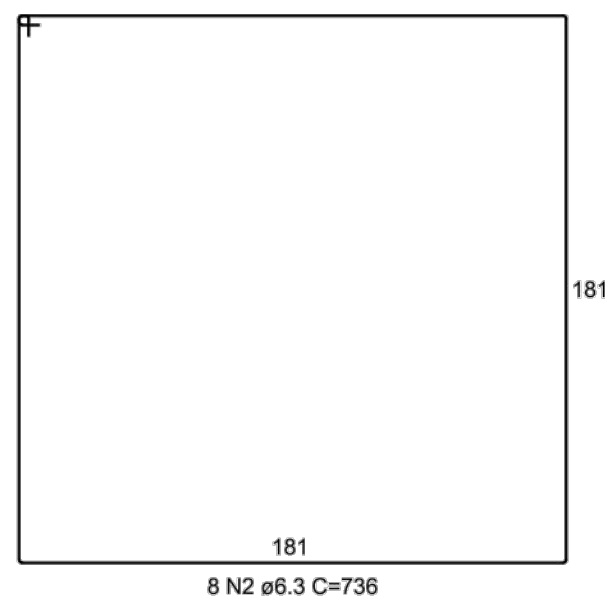
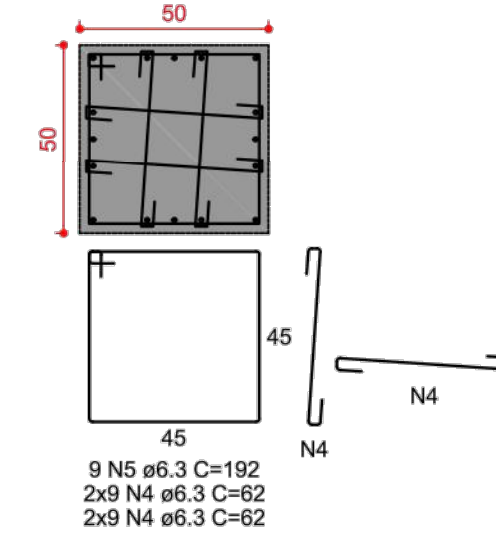
CORTE A-A  
ESC 1:25



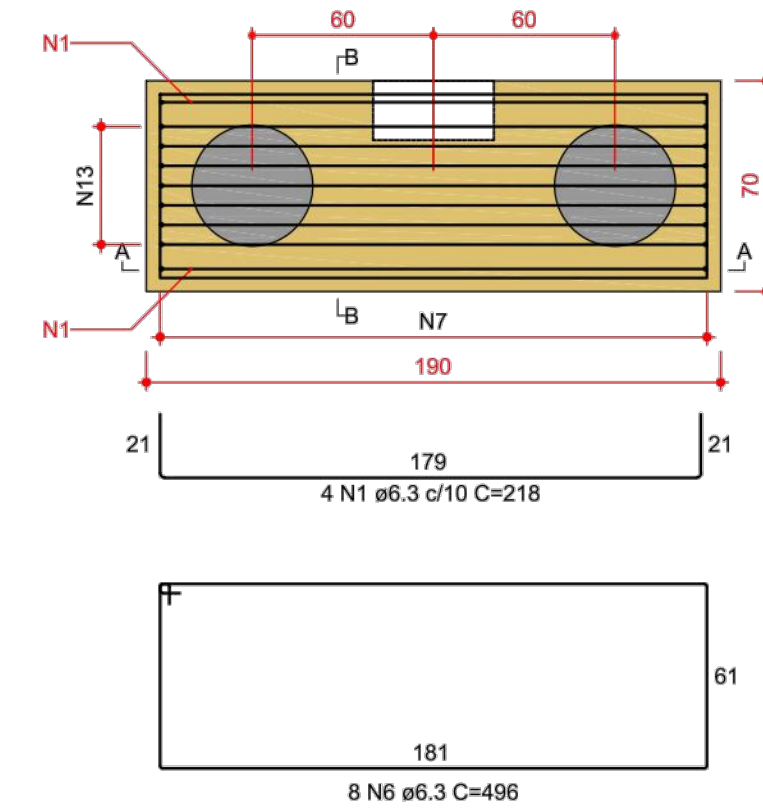
CORTE B-B  
ESC 1:25



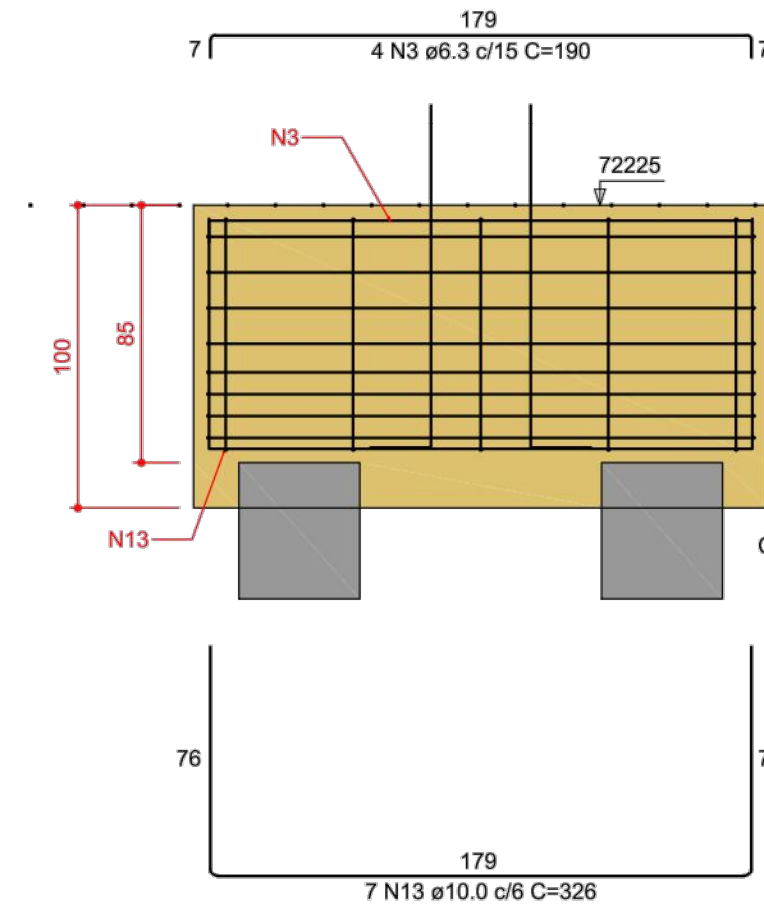
DETALHE DO PILAR  
ESC 1:20



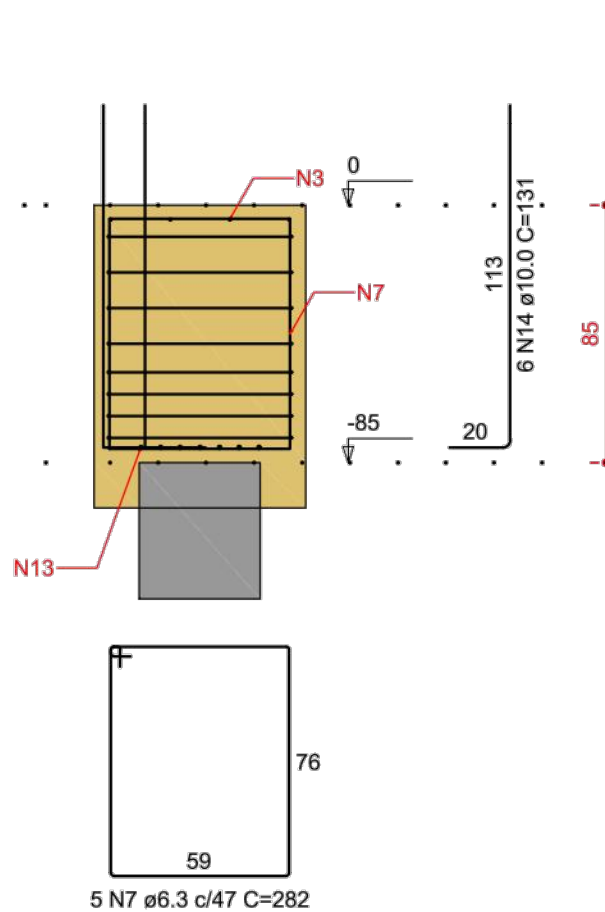
BB-7  
2xHC40  
PLANTA  
ESC 1:25



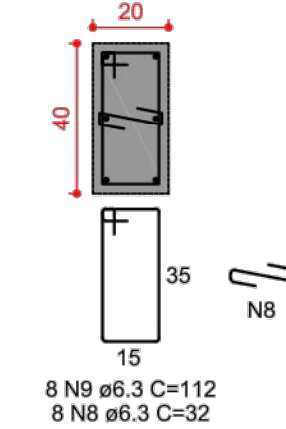
CORTE A-A  
ESC 1:25



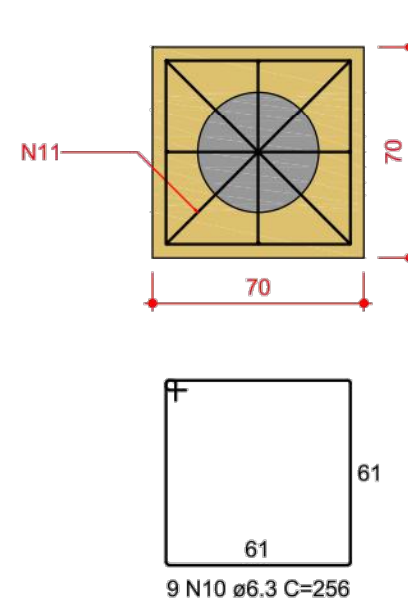
CORTE B-B  
ESC 1:25



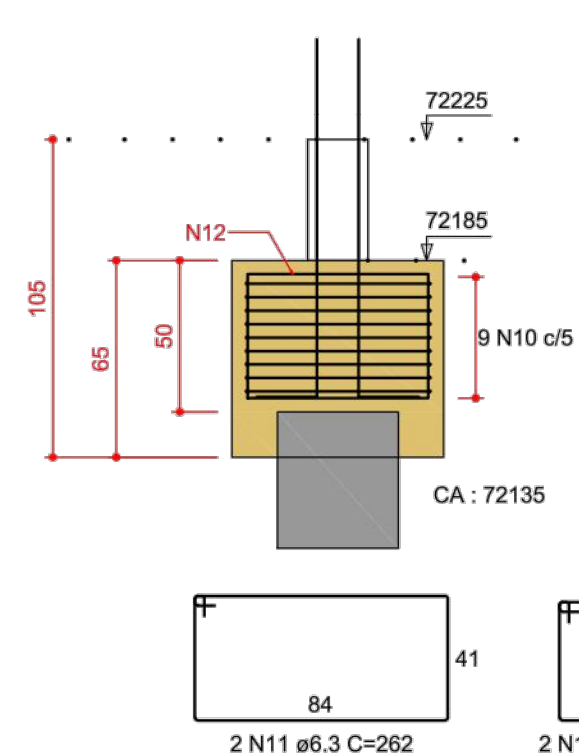
DETALHE DO PILAR  
ESC 1:20



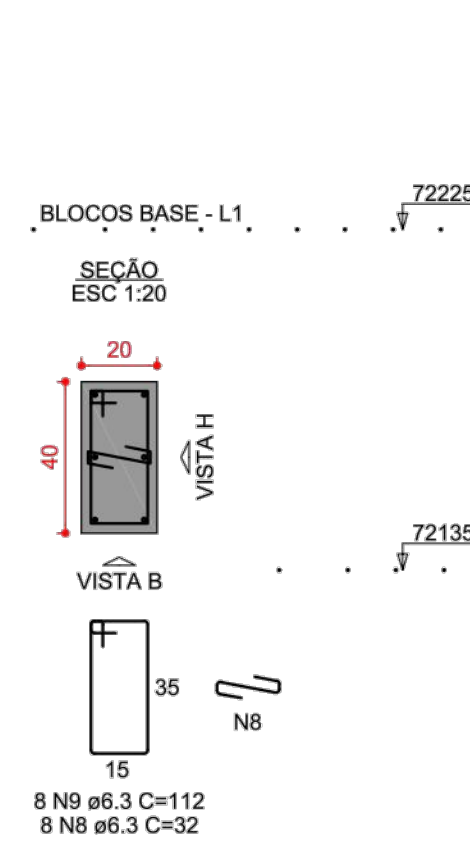
BB-8=BB-25  
1xHC40  
PLANTA  
ESC 1:25



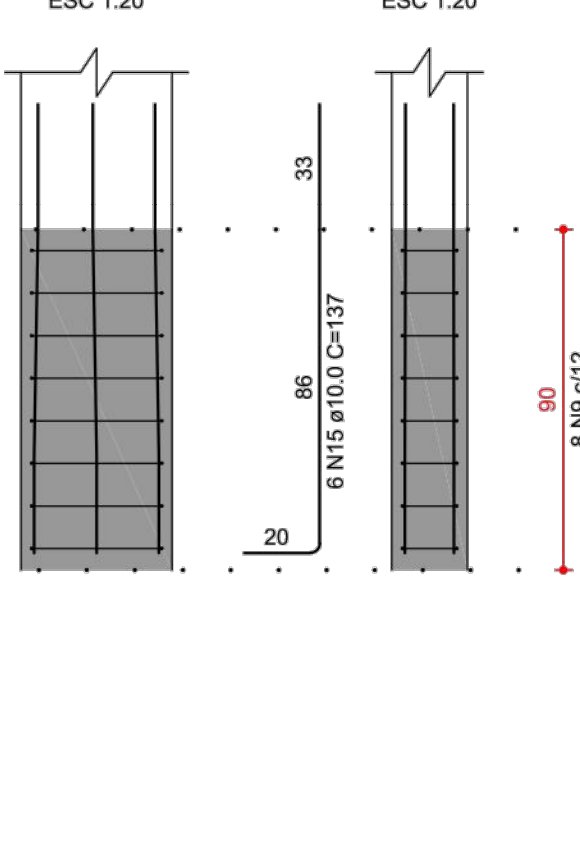
CORTE  
ESC 1:25



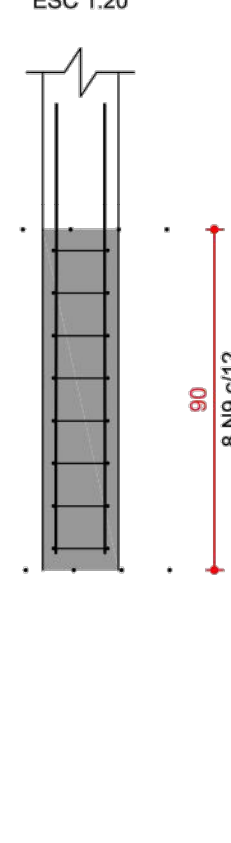
PB-8=PB-25



VISTA H  
ESC 1:20



VISTA B  
ESC 1:20



RELAÇÃO DO AÇO					
BB-6 2xPB-8		BB-7		2xBB-25	
AÇO	N	DIAM (mm)	QUANT	C.UNIT (cm)	C.TOTAL (cm)
CA50	1	6.3	22	218	4796
	2	6.3	8	736	5888
	3	6.3	22	190	4180
	4	6.3	36	62	2232
	5	6.3	9	192	1728
	6	6.3	8	496	3968
	7	6.3	5	282	1410
	8	6.3	24	32	768
	9	6.3	24	112	2688
	10	6.3	18	256	4608
	11	6.3	4	262	1048
	12	6.3	4	208	832
	13	10.0	43	326	14018
	14	10.0	18	131	2358
	15	10.0	12	137	1644

RESUMO DO AÇO

AÇO	DIAM (mm)	C.TOTAL (m)	PESO + 10% (kg)
CA50	6.3	341.5	91.9
	10.0	180.2	122.2
PESO TOTAL (kg)			
CA50		214.1	

Volume de concreto (C-30) = 5.57 m³  
Área de forma = 18.60 m²

PRÉDIO BOULEVARD  
ARMAÇÃO BLOCO E PILARES DE  
FUNDAÇÃO

FOLHA:  
**013**



MUNICÍPIO DE CARAPICUÍBA  
SECRETARIA DE DESENVOLVIMENTO URBANO  
SETOR DE PROJETOS

OBRA: Construção de Passarela de Interligação dos Terminais Rodoviários  
Metropolitano e Municipal com a Estação CPTM e Av. Francisco Pignatari

LOCAL: Av. Governador Mário Covas e Av. Francisco Pignatari

RECURSO/CONVÊNIO: XXXXXXXXXXXXXXXXXXXX ART/RRT: 28027230172709526

TABELA DE ÁREAS	
Total de áreas	
Área total	XX m2
Área de intervenção	1.074,8 m2

DIORGENS GODÓI DA SILVA  
ENGENHEIRO CIVIL  
CREA-SP nº 5069838630

DATA: 18/02/2022 ESCALA: 1:200

DESENHO ELABORADO POR DIORGENS GODÓI DA SILVA  
ENGENHEIRO CIVIL  
CREA-SP nº 5069838630

REVISÃO NÚMERO: 2 MÊS: 02/2022